

You will **save money** and get **top performance** when you cut with natural gas

For savings, performance, convenience and safety, hi-pressure natural gas is a better alternative to acetylene, propane, propylene, MAPP or other fuel gases.

G-TEC Systems provide state of the art technology to make hi-pressure natural gas the best choice for your oxy-fuel torch work.



**Approved By CSA-International  
For Installation Anywhere!**

G-TEC Natural Gas Pressure Boosters are approved for design, performance and safety. Fire Marshals will approve a G-TEC installation without question.



## Reduce fuel gas costs by up to 90%, get high quality cuts and stop wasting time changing cylinders

The **G-TEC Natural Gas Pressure Booster System** connects to your building's utility natural gas line then boosts the pressure for high performance cutting. Simply turn on a G-TEC Torch Booster or use a natural gas cylinder filled with an FM-100 Refueler and you are ready to make clean cuts with quick starts and impressive speed. With a G-TEC System you can keep the torches you already have and simply change the tip to a natural gas tip.

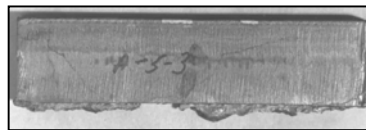
### Cut Fuel Gas Costs By As Much As 90%

- Natural gas is the least expensive fuel gas per 100,000 BTUs
- Stop paying for cylinder rental and delivery

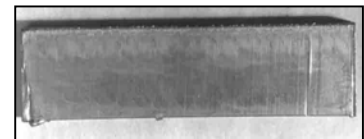
### Get High Quality Cuts

- After comparing the cutting performance of natural gas with acetylene the Edison Welding Institute reported -

*"Natural gas is an excellent fuel for braze welding, flame cutting, heating and soldering. Natural gas had less tendency to round the top edge of the cut, and produced less slag or dross. Also, the dross that was produced during cutting with natural gas did not adhere as tightly to the plate and was more easily removed. No difference was found in cutting speed between acetylene and natural gas..."*



*Cuts made with acetylene on 2" plate leave slag - and plenty of grinding*



*Cuts made with natural gas are cleaner - little slag and much less grinding required*

### Never Change Fuel Gas Cylinders

- G-TEC Torch Boosters provide a continuous gas supply without cylinders
- End unproductive time spent storing, moving or changing cylinders

**G-TEC Natural Gas Systems**